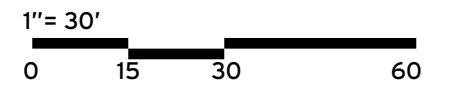
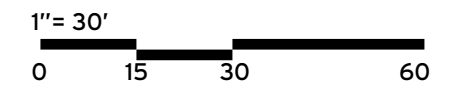
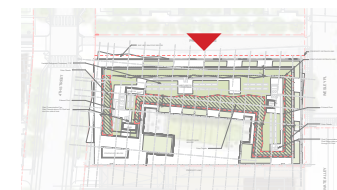


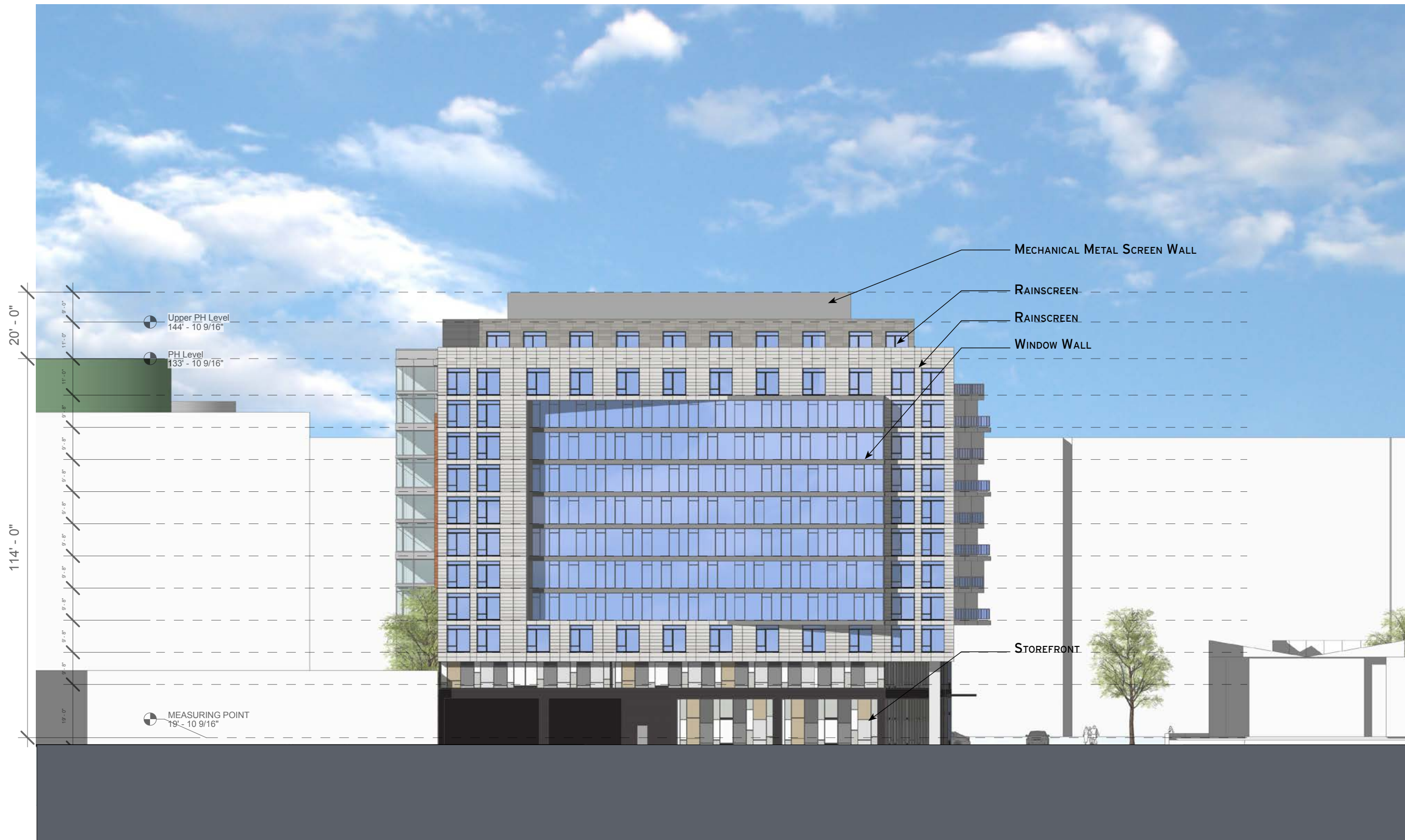
Elevation on 4th St. SW



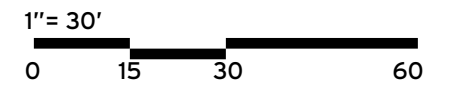
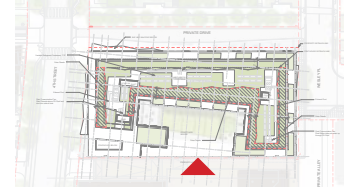
ZONING COMMISSION
 District of Columbia
 CASE NO.02-38J
 EXHIBIT NO.2M2



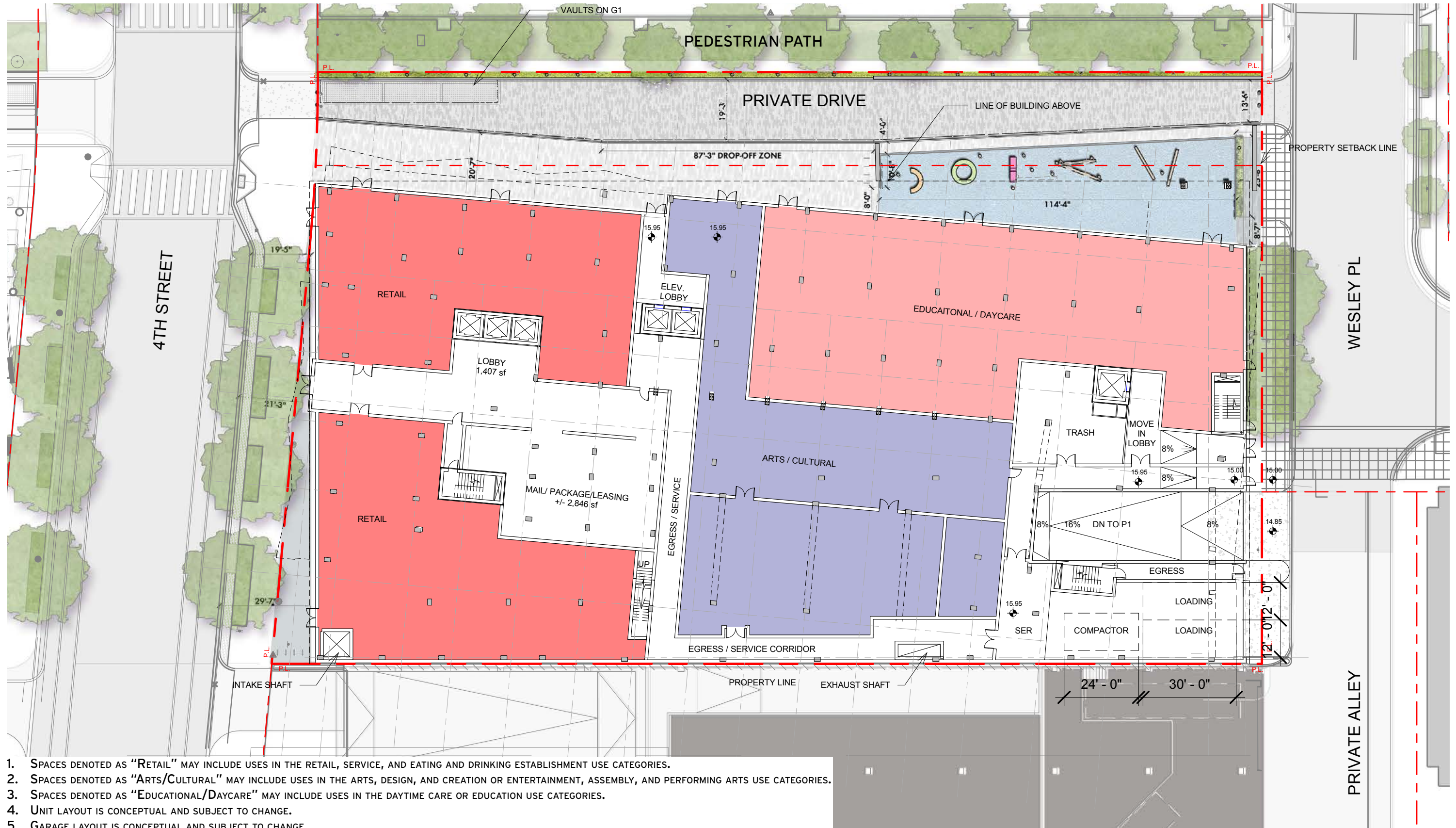
Elevation on Wesley Pl. SW

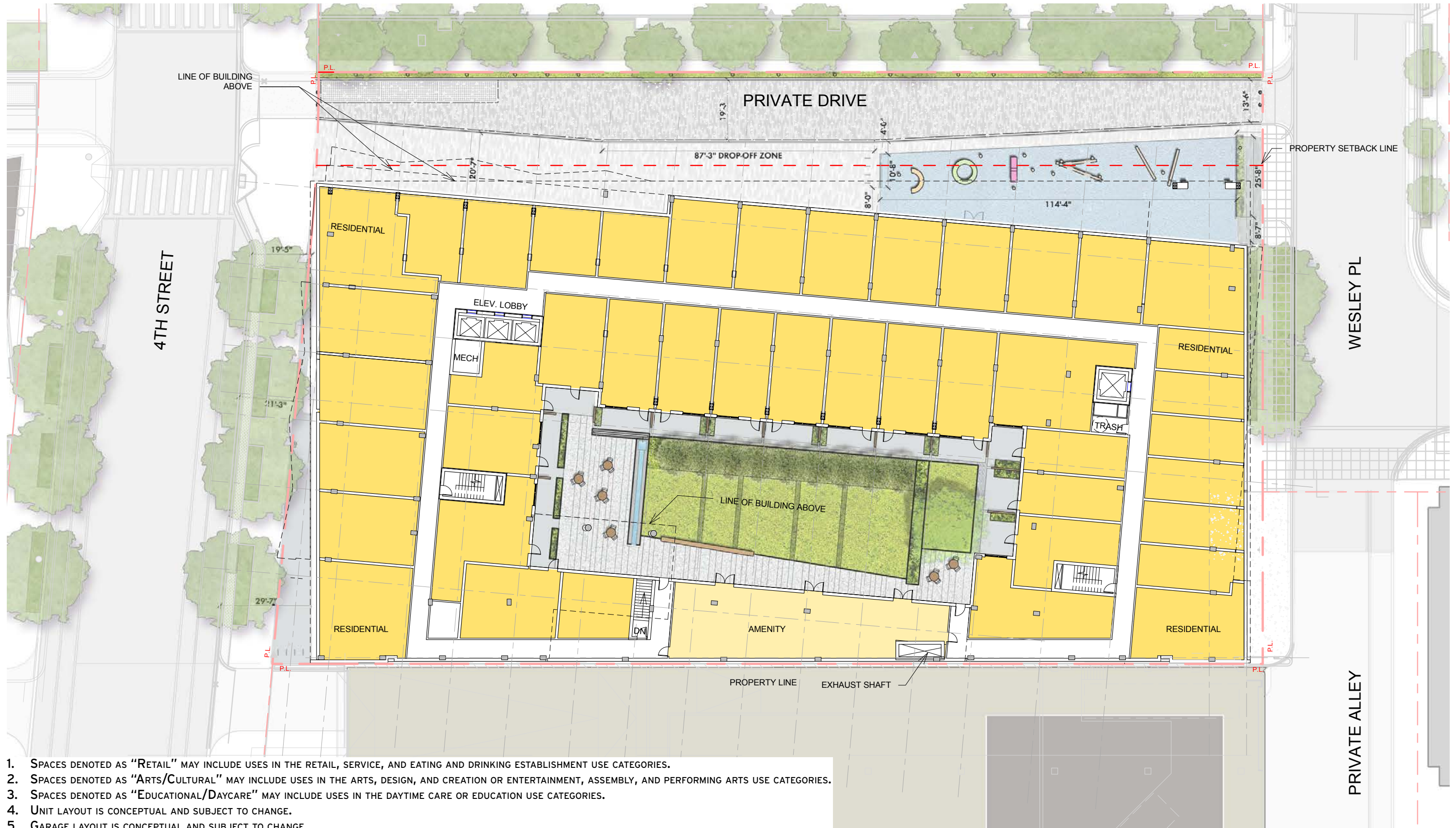


Courtyard Elevation



Ground Floor Plan



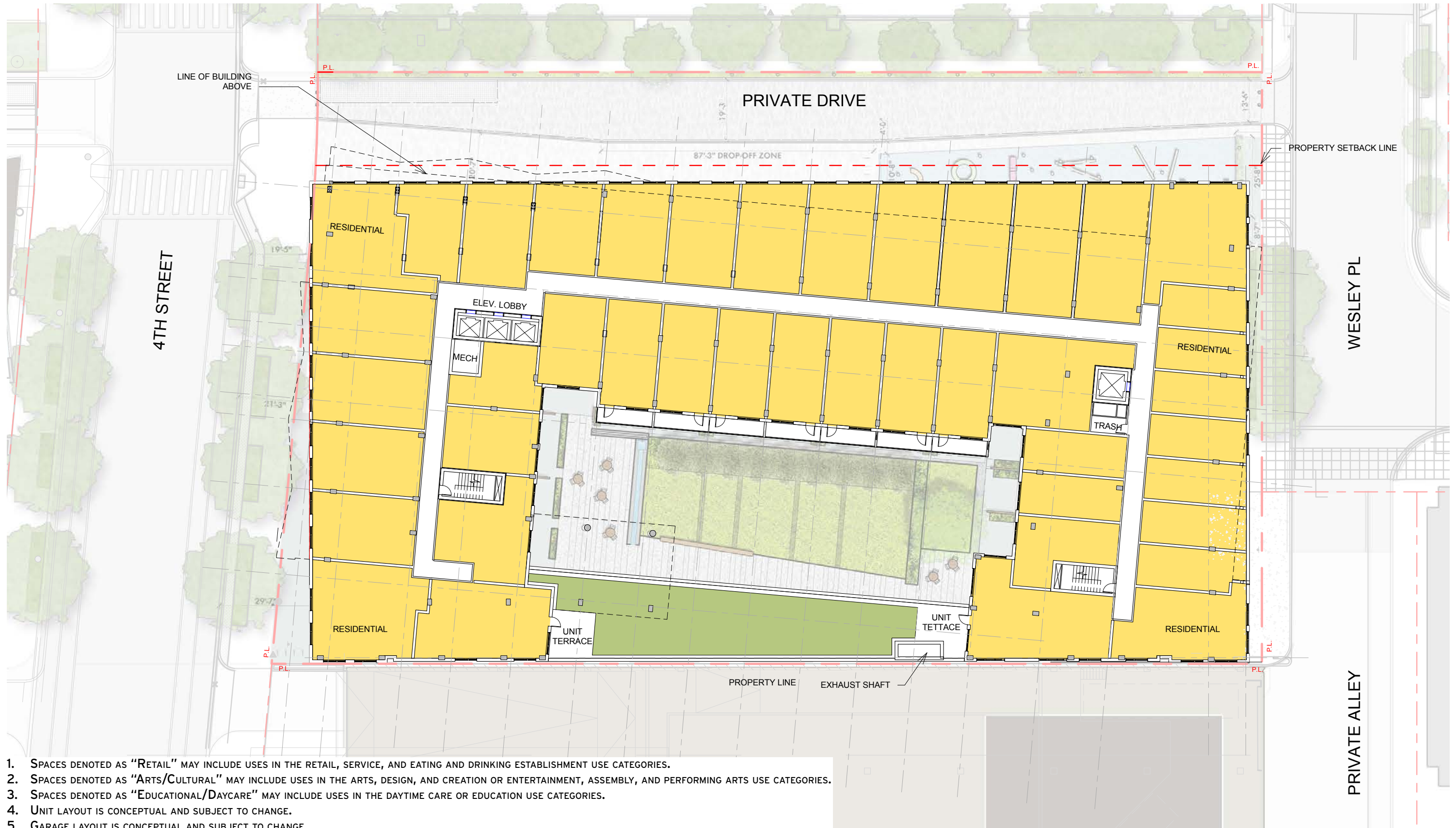


1. SPACES DENOTED AS "RETAIL" MAY INCLUDE USES IN THE RETAIL, SERVICE, AND EATING AND DRINKING ESTABLISHMENT USE CATEGORIES.
2. SPACES DENOTED AS "ARTS/CULTURAL" MAY INCLUDE USES IN THE ARTS, DESIGN, AND CREATION OR ENTERTAINMENT, ASSEMBLY, AND PERFORMING ARTS USE CATEGORIES.
3. SPACES DENOTED AS "EDUCATIONAL/DAYCARE" MAY INCLUDE USES IN THE DAYTIME CARE OR EDUCATION USE CATEGORIES.
4. UNIT LAYOUT IS CONCEPTUAL AND SUBJECT TO CHANGE.
5. GARAGE LAYOUT IS CONCEPTUAL AND SUBJECT TO CHANGE

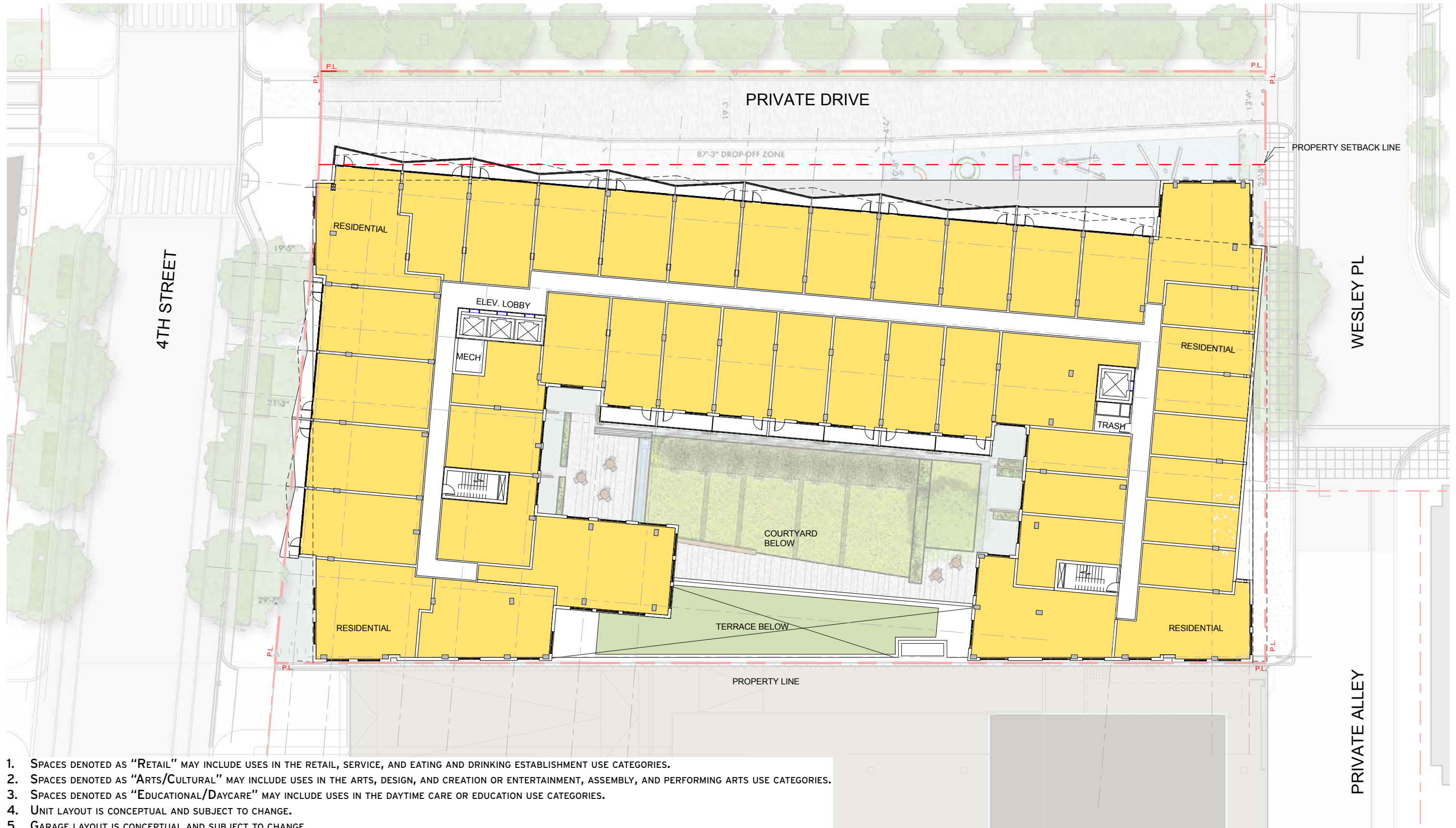
NOTES:

1. Garage layout is conceptual and subject to change

Third Floor Plan



1. SPACES DENOTED AS "RETAIL" MAY INCLUDE USES IN THE RETAIL, SERVICE, AND EATING AND DRINKING ESTABLISHMENT USE CATEGORIES.
2. SPACES DENOTED AS "ARTS/CULTURAL" MAY INCLUDE USES IN THE ARTS, DESIGN, AND CREATION OR ENTERTAINMENT, ASSEMBLY, AND PERFORMING ARTS USE CATEGORIES.
3. SPACES DENOTED AS "EDUCATIONAL/DAYCARE" MAY INCLUDE USES IN THE DAYTIME CARE OR EDUCATION USE CATEGORIES.
4. UNIT LAYOUT IS CONCEPTUAL AND SUBJECT TO CHANGE.
5. GARAGE LAYOUT IS CONCEPTUAL AND SUBJECT TO CHANGE

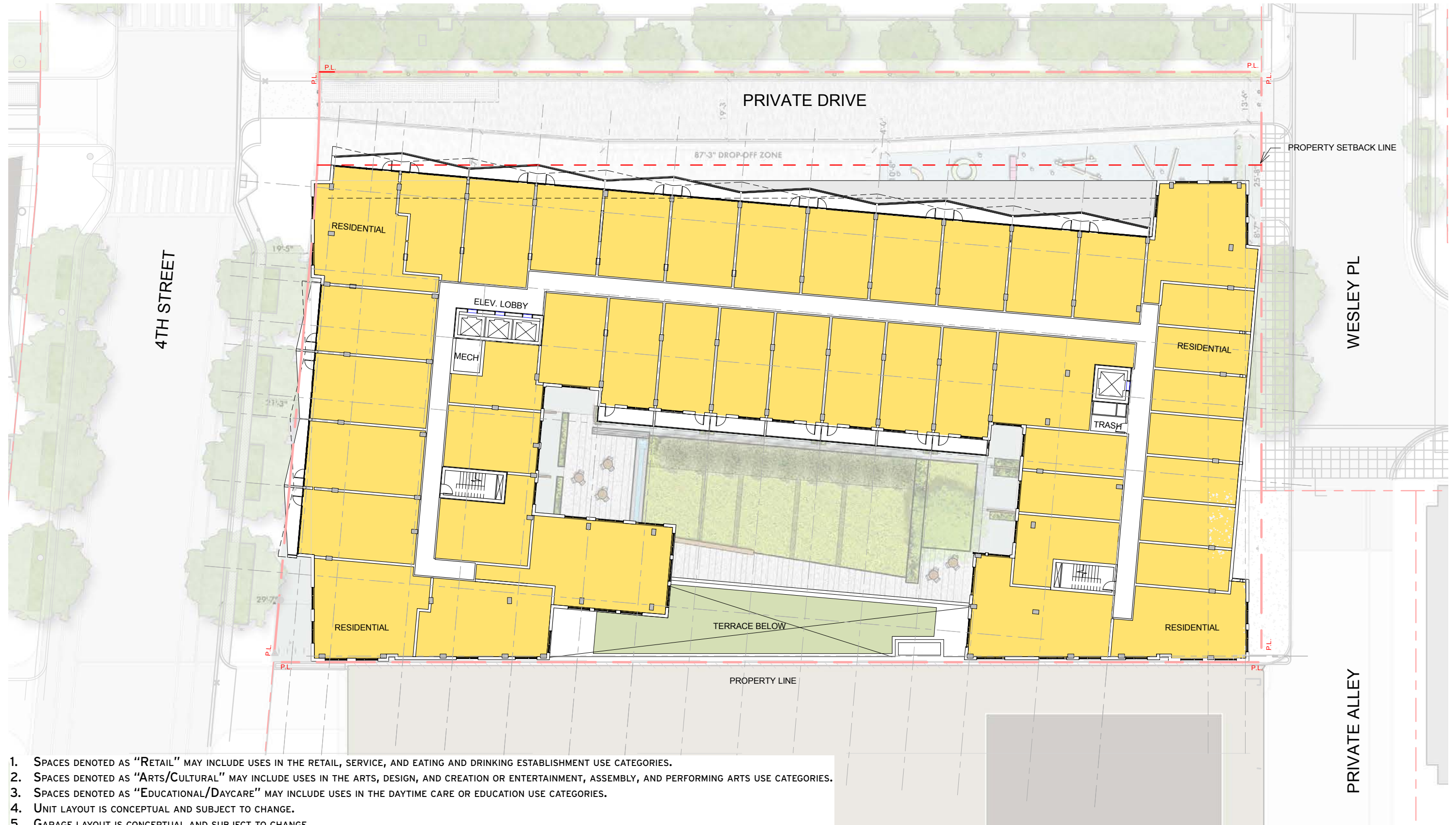


1. SPACES DENOTED AS "RETAIL" MAY INCLUDE USES IN THE RETAIL, SERVICE, AND EATING AND DRINKING ESTABLISHMENT USE CATEGORIES.
2. SPACES DENOTED AS "ARTS/CULTURAL" MAY INCLUDE USES IN THE ARTS, DESIGN, AND CREATION OR ENTERTAINMENT, ASSEMBLY, AND PERFORMING ARTS USE CATEGORIES.
3. SPACES DENOTED AS "EDUCATIONAL/DAYCARE" MAY INCLUDE USES IN THE DAYTIME CARE OR EDUCATION USE CATEGORIES.
4. UNIT LAYOUT IS CONCEPTUAL AND SUBJECT TO CHANGE.
5. GARAGE LAYOUT IS CONCEPTUAL AND SUBJECT TO CHANGE

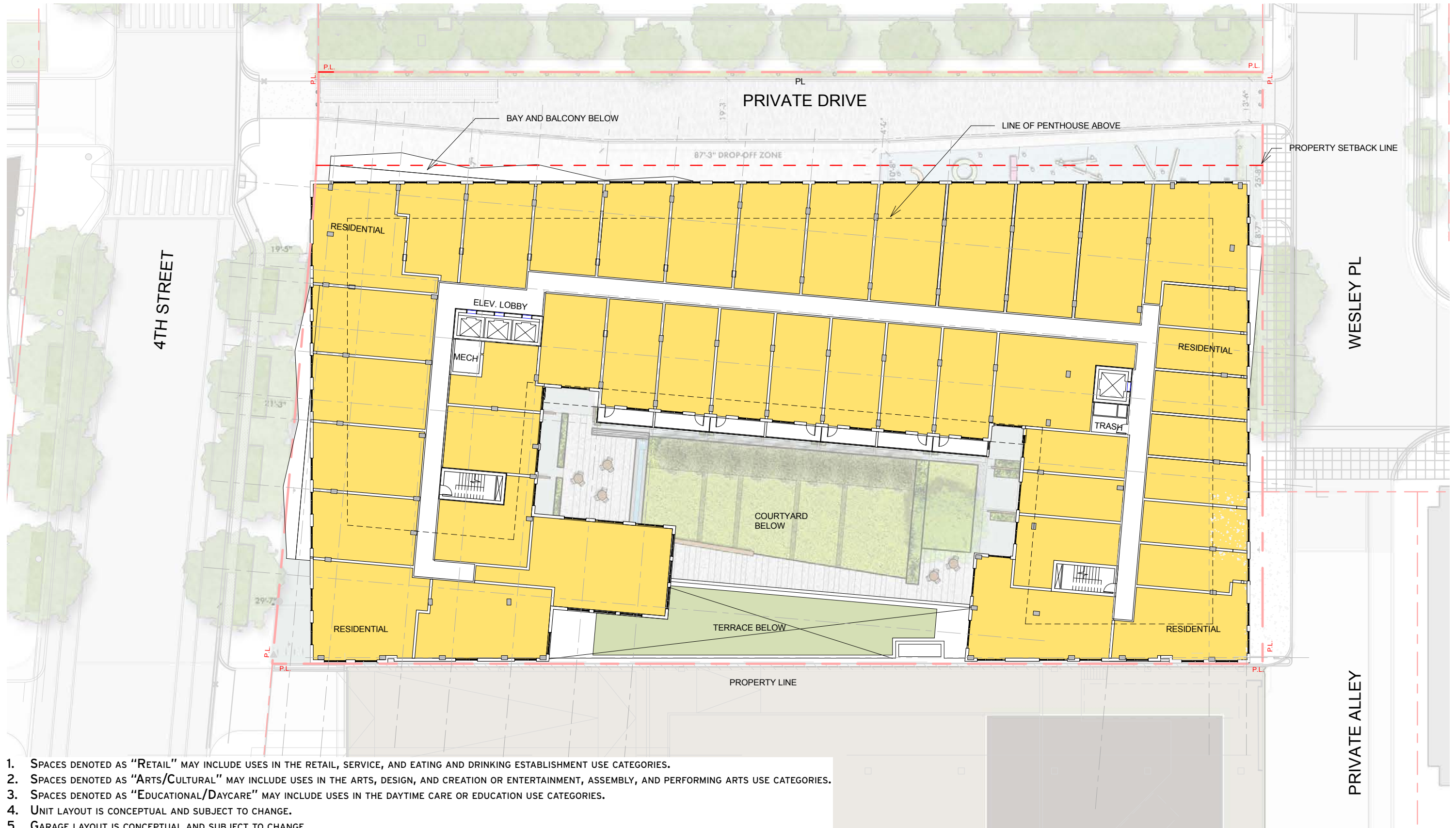
NOTES:

1. Unit layout is conceptual and subject to change

Typical Floor Plan | 5-10

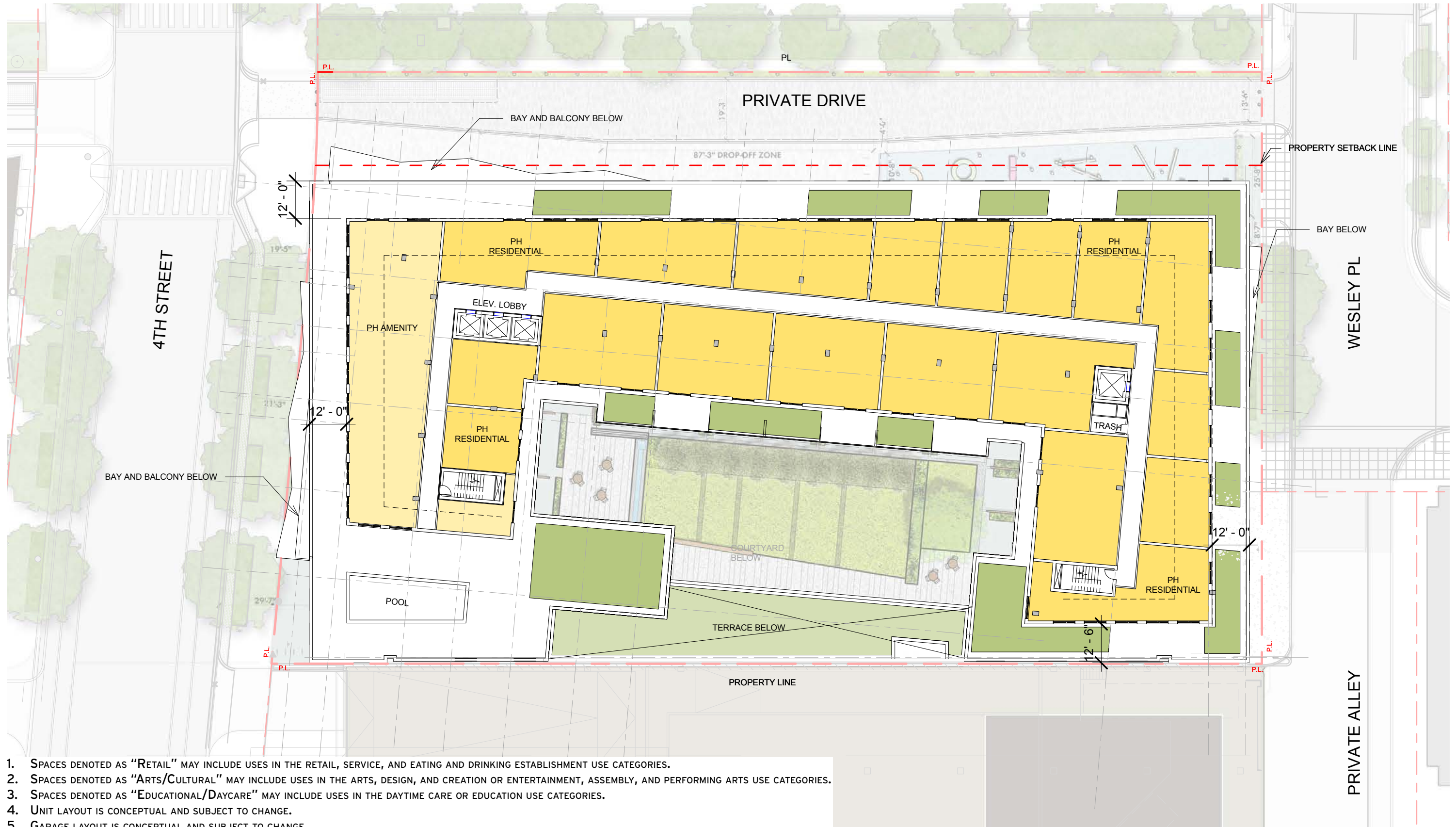


1. SPACES DENOTED AS "RETAIL" MAY INCLUDE USES IN THE RETAIL, SERVICE, AND EATING AND DRINKING ESTABLISHMENT USE CATEGORIES.
2. SPACES DENOTED AS "ARTS/CULTURAL" MAY INCLUDE USES IN THE ARTS, DESIGN, AND CREATION OR ENTERTAINMENT, ASSEMBLY, AND PERFORMING ARTS USE CATEGORIES.
3. SPACES DENOTED AS "EDUCATIONAL/DAYCARE" MAY INCLUDE USES IN THE DAYTIME CARE OR EDUCATION USE CATEGORIES.
4. UNIT LAYOUT IS CONCEPTUAL AND SUBJECT TO CHANGE.
5. GARAGE LAYOUT IS CONCEPTUAL AND SUBJECT TO CHANGE.

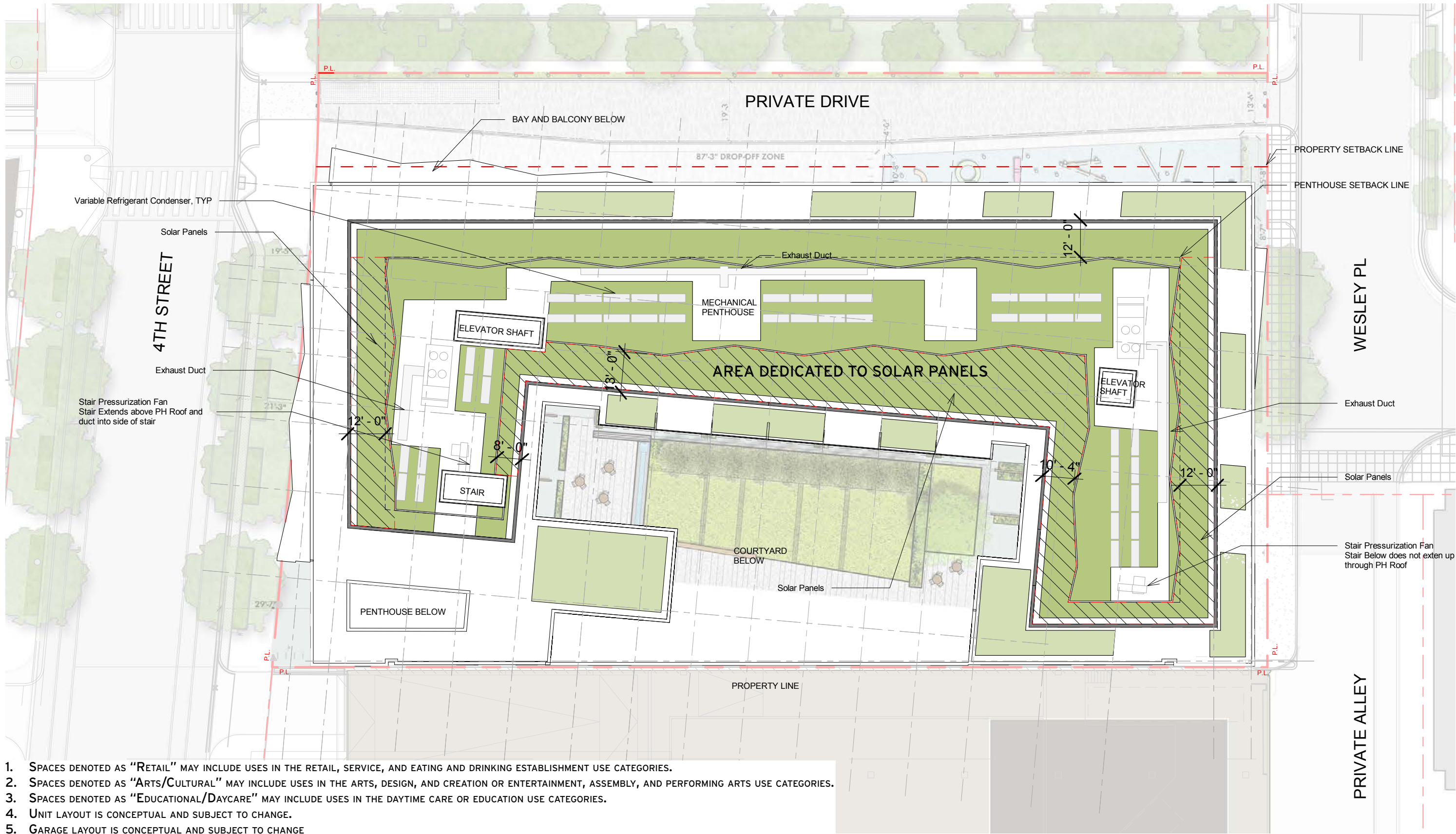


1. SPACES DENOTED AS "RETAIL" MAY INCLUDE USES IN THE RETAIL, SERVICE, AND EATING AND DRINKING ESTABLISHMENT USE CATEGORIES.
2. SPACES DENOTED AS "ARTS/CULTURAL" MAY INCLUDE USES IN THE ARTS, DESIGN, AND CREATION OR ENTERTAINMENT, ASSEMBLY, AND PERFORMING ARTS USE CATEGORIES.
3. SPACES DENOTED AS "EDUCATIONAL/DAYCARE" MAY INCLUDE USES IN THE DAYTIME CARE OR EDUCATION USE CATEGORIES.
4. UNIT LAYOUT IS CONCEPTUAL AND SUBJECT TO CHANGE.
5. GARAGE LAYOUT IS CONCEPTUAL AND SUBJECT TO CHANGE.

Twelfth Floor Plan | Penthouse



1. SPACES DENOTED AS "RETAIL" MAY INCLUDE USES IN THE RETAIL, SERVICE, AND EATING AND DRINKING ESTABLISHMENT USE CATEGORIES.
2. SPACES DENOTED AS "ARTS/CULTURAL" MAY INCLUDE USES IN THE ARTS, DESIGN, AND CREATION OR ENTERTAINMENT, ASSEMBLY, AND PERFORMING ARTS USE CATEGORIES.
3. SPACES DENOTED AS "EDUCATIONAL/DAYCARE" MAY INCLUDE USES IN THE DAYTIME CARE OR EDUCATION USE CATEGORIES.
4. UNIT LAYOUT IS CONCEPTUAL AND SUBJECT TO CHANGE.
5. GARAGE LAYOUT IS CONCEPTUAL AND SUBJECT TO CHANGE.

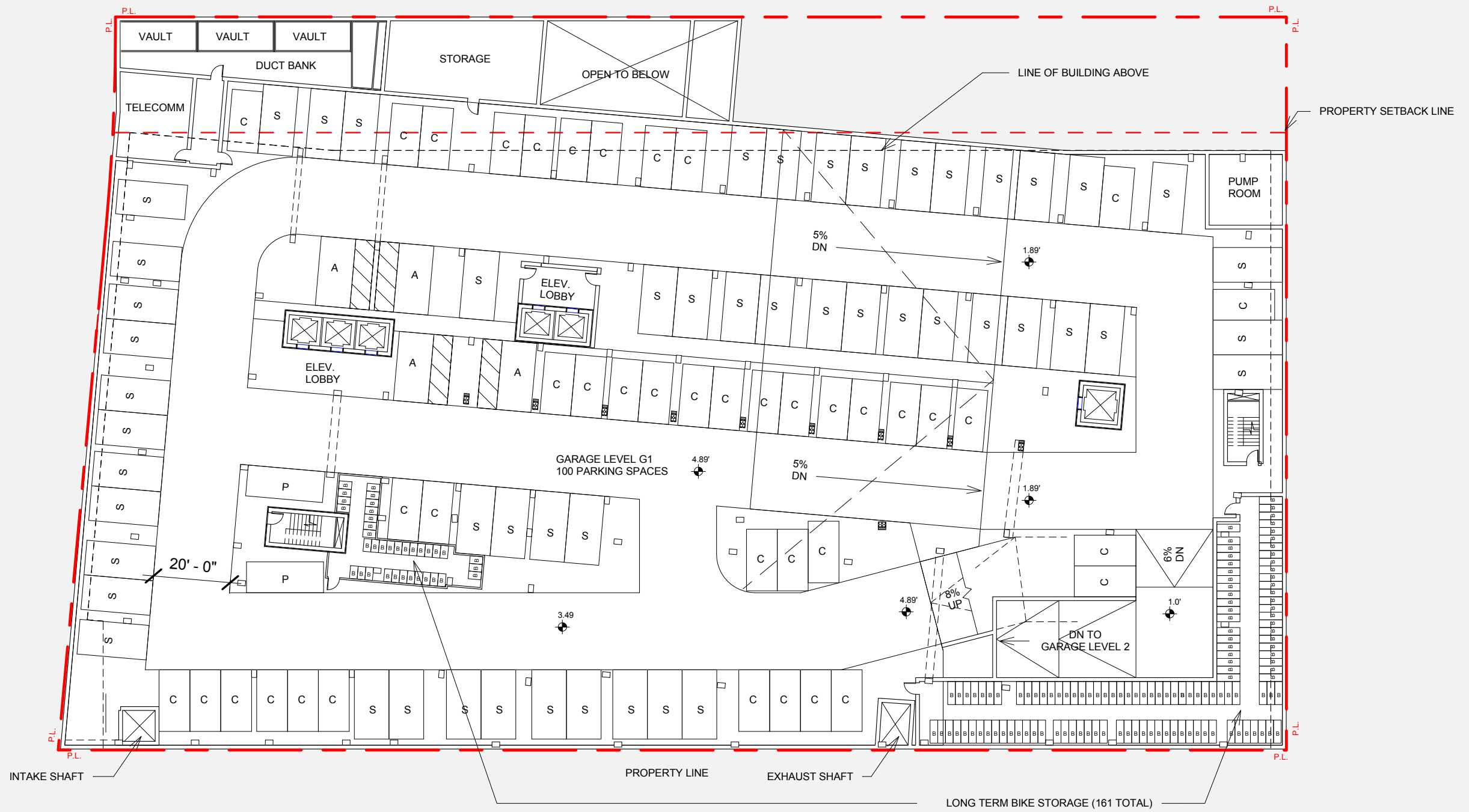


1. SPACES DENOTED AS "RETAIL" MAY INCLUDE USES IN THE RETAIL, SERVICE, AND EATING AND DRINKING ESTABLISHMENT USE CATEGORIES.
2. SPACES DENOTED AS "ARTS/CULTURAL" MAY INCLUDE USES IN THE ARTS, DESIGN, AND CREATION OR ENTERTAINMENT, ASSEMBLY, AND PERFORMING ARTS USE CATEGORIES.
3. SPACES DENOTED AS "EDUCATIONAL/DAYCARE" MAY INCLUDE USES IN THE DAYTIME CARE OR EDUCATION USE CATEGORIES.
4. UNIT LAYOUT IS CONCEPTUAL AND SUBJECT TO CHANGE.
5. GARAGE LAYOUT IS CONCEPTUAL AND SUBJECT TO CHANGE.

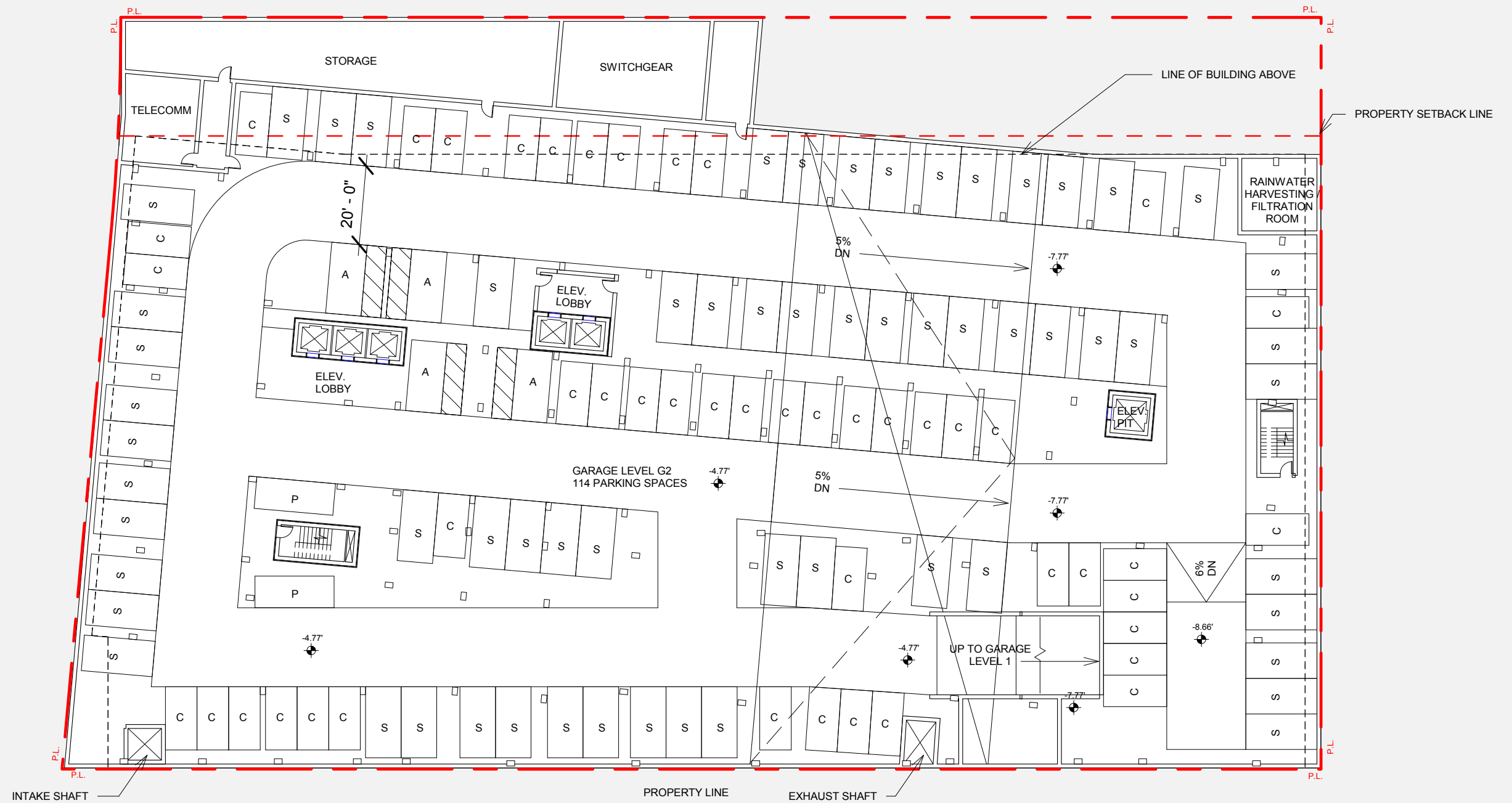
NOTES:

1. Unit layout is conceptual and subject to change

Garage Level 1 Plan | G1

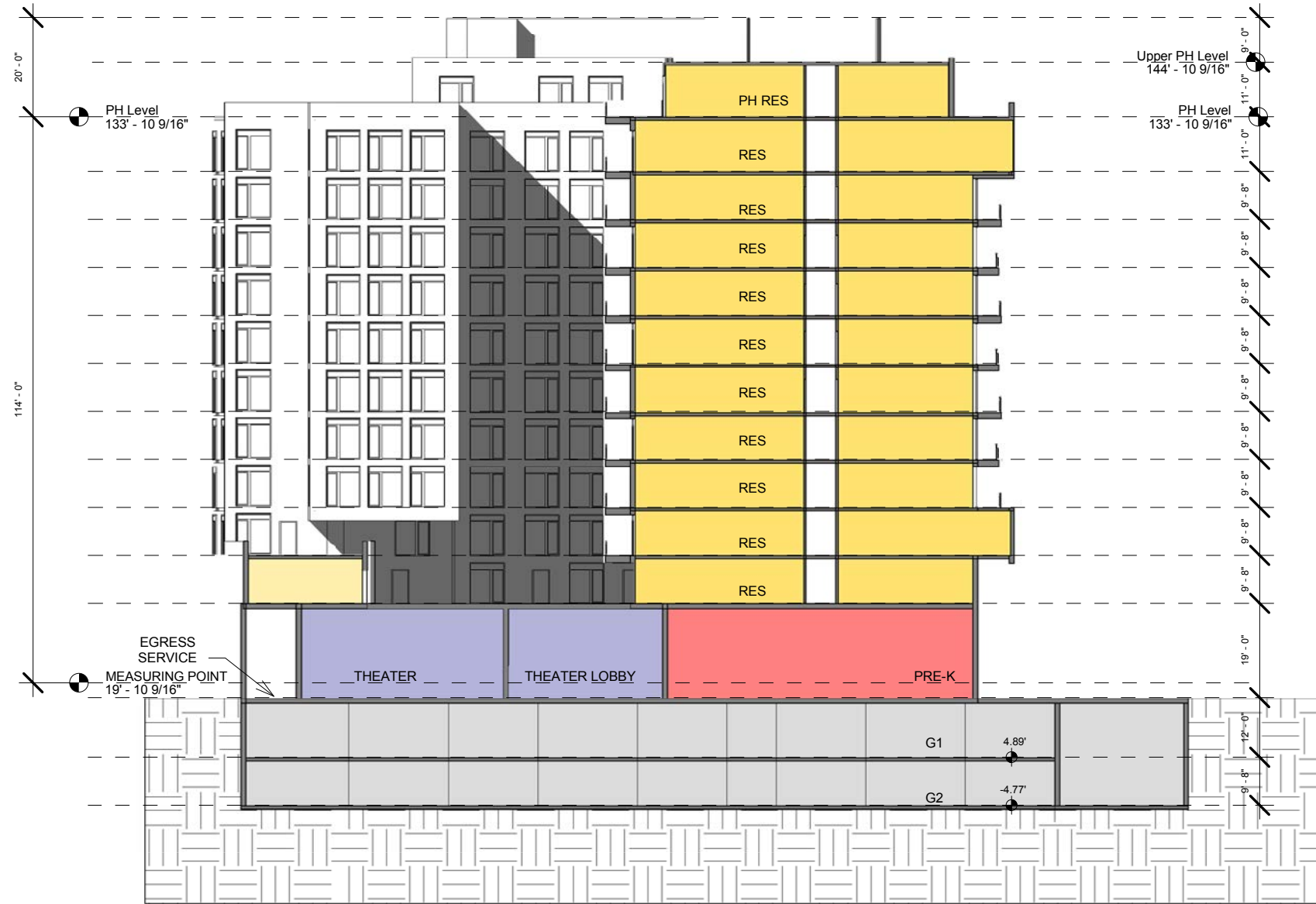


1. SPACES DENOTED AS "RETAIL" MAY INCLUDE USES IN THE RETAIL, SERVICE, AND EATING AND DRINKING ESTABLISHMENT USE CATEGORIES.
2. SPACES DENOTED AS "ARTS/CULTURAL" MAY INCLUDE USES IN THE ARTS, DESIGN, AND CREATION OR ENTERTAINMENT, ASSEMBLY, AND PERFORMING ARTS USE CATEGORIES.
3. SPACES DENOTED AS "EDUCATIONAL/DAYCARE" MAY INCLUDE USES IN THE DAYTIME CARE OR EDUCATION USE CATEGORIES.
4. UNIT LAYOUT IS CONCEPTUAL AND SUBJECT TO CHANGE.
5. GARAGE LAYOUT IS CONCEPTUAL AND SUBJECT TO CHANGE

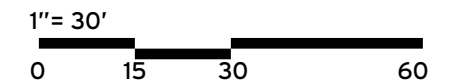
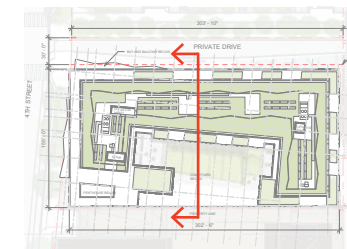


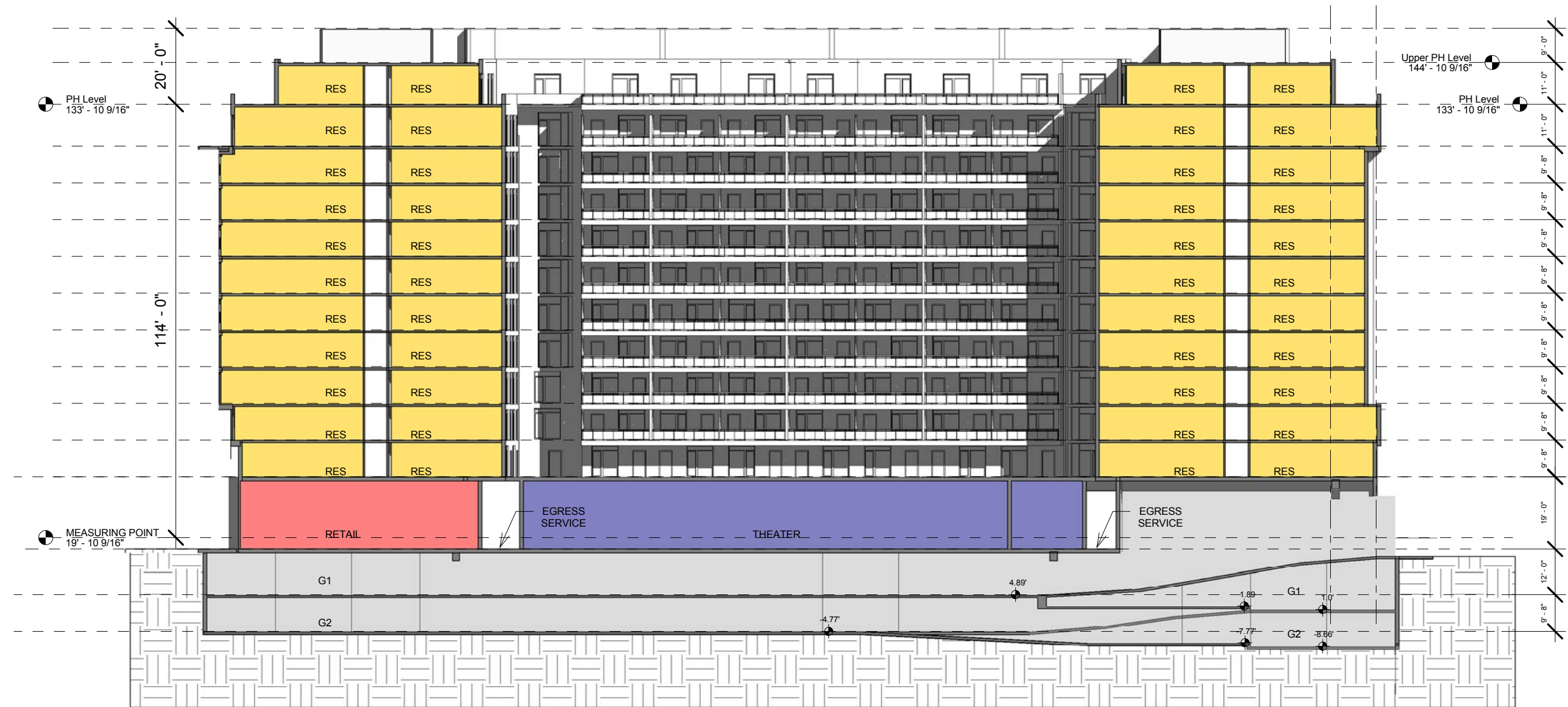
1. SPACES DENOTED AS "RETAIL" MAY INCLUDE USES IN THE RETAIL, SERVICE, AND EATING AND DRINKING ESTABLISHMENT USE CATEGORIES.
2. SPACES DENOTED AS "ARTS/CULTURAL" MAY INCLUDE USES IN THE ARTS, DESIGN, AND CREATION OR ENTERTAINMENT, ASSEMBLY, AND PERFORMING ARTS USE CATEGORIES.
3. SPACES DENOTED AS "EDUCATIONAL/DAYCARE" MAY INCLUDE USES IN THE DAYTIME CARE OR EDUCATION USE CATEGORIES.
4. UNIT LAYOUT IS CONCEPTUAL AND SUBJECT TO CHANGE.
5. GARAGE LAYOUT IS CONCEPTUAL AND SUBJECT TO CHANGE

Transverse Section | S-N

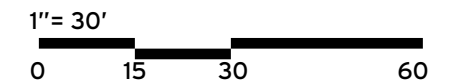
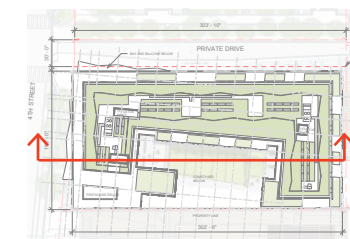


- SPACES DENOTED AS "RETAIL" MAY INCLUDE USES IN THE RETAIL, SERVICE, AND EATING AND DRINKING ESTABLISHMENT USE CATEGORIES.
- SPACES DENOTED AS "ARTS/CULTURAL" MAY INCLUDE USES IN THE ARTS, DESIGN, AND CREATION OR ENTERTAINMENT, ASSEMBLY, AND PERFORMING ARTS USE CATEGORIES.
- SPACES DENOTED AS "EDUCATIONAL/DAYCARE" MAY INCLUDE USES IN THE DAYTIME CARE OR EDUCATION USE CATEGORIES.

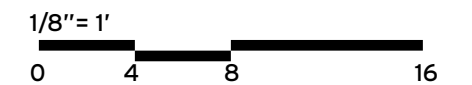
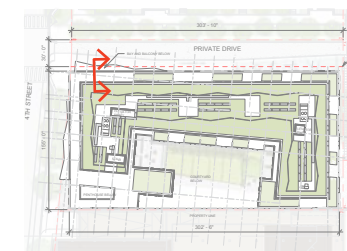
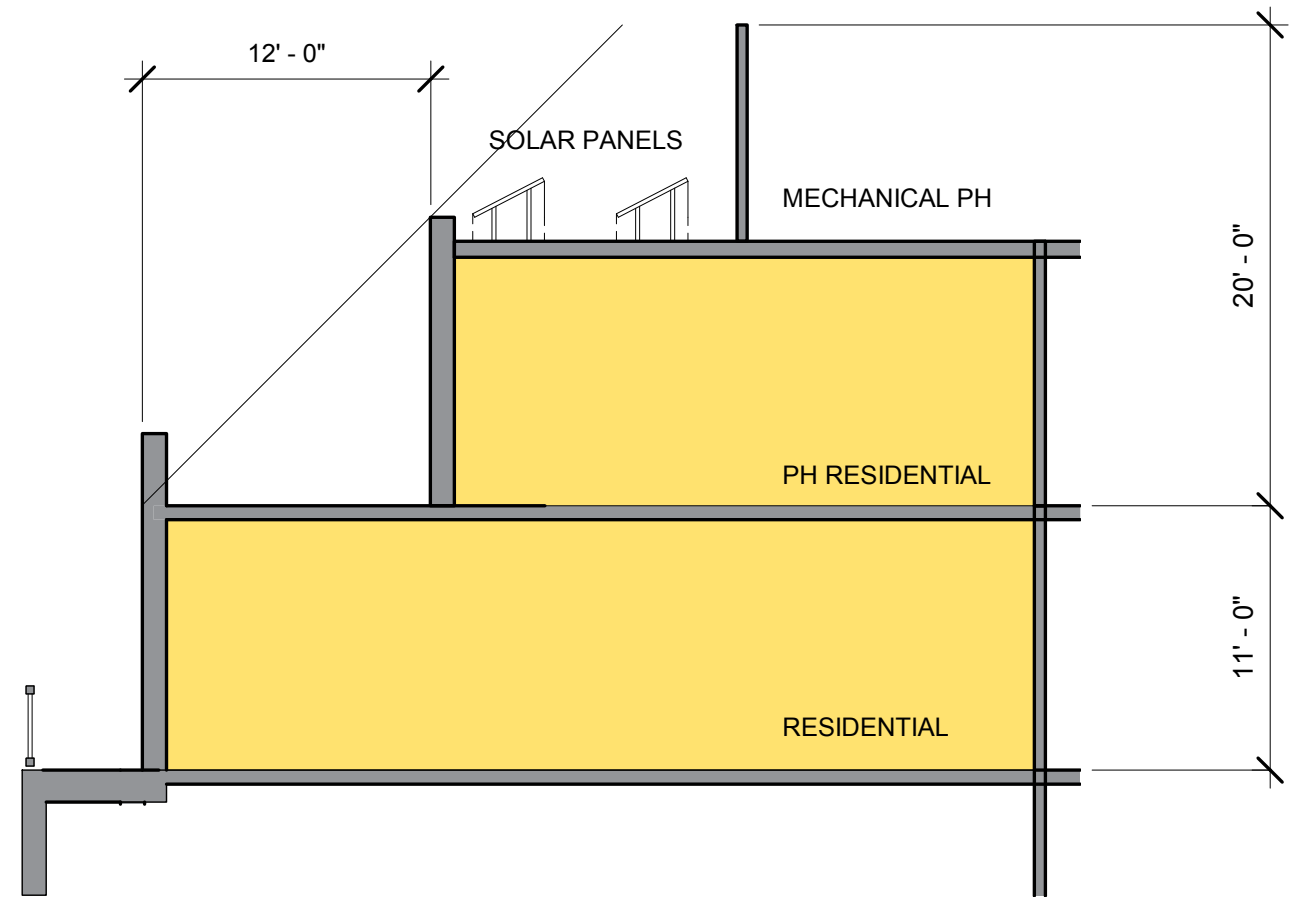
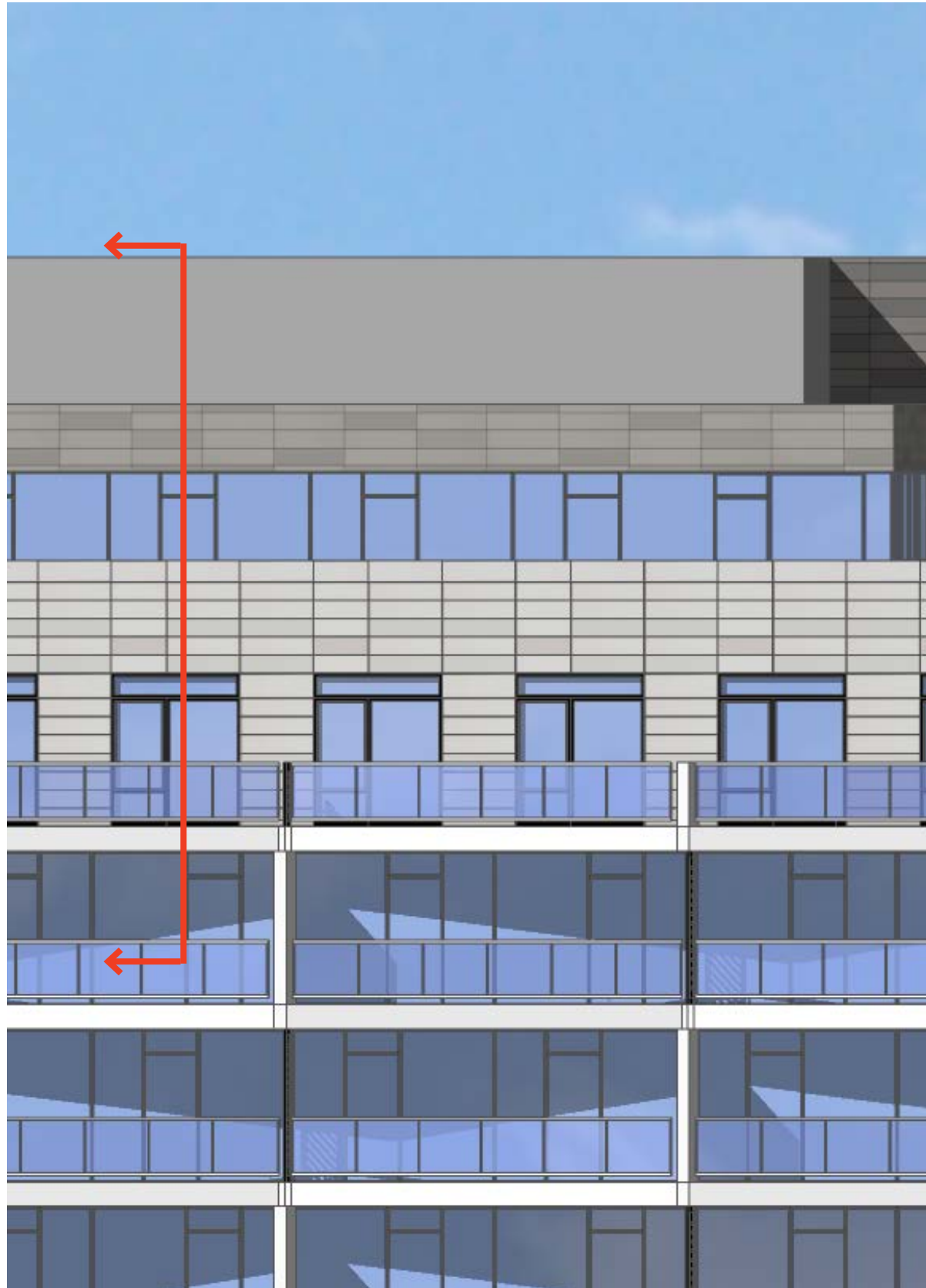




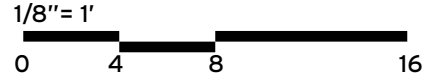
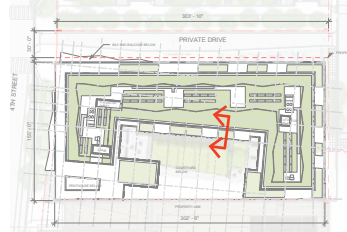
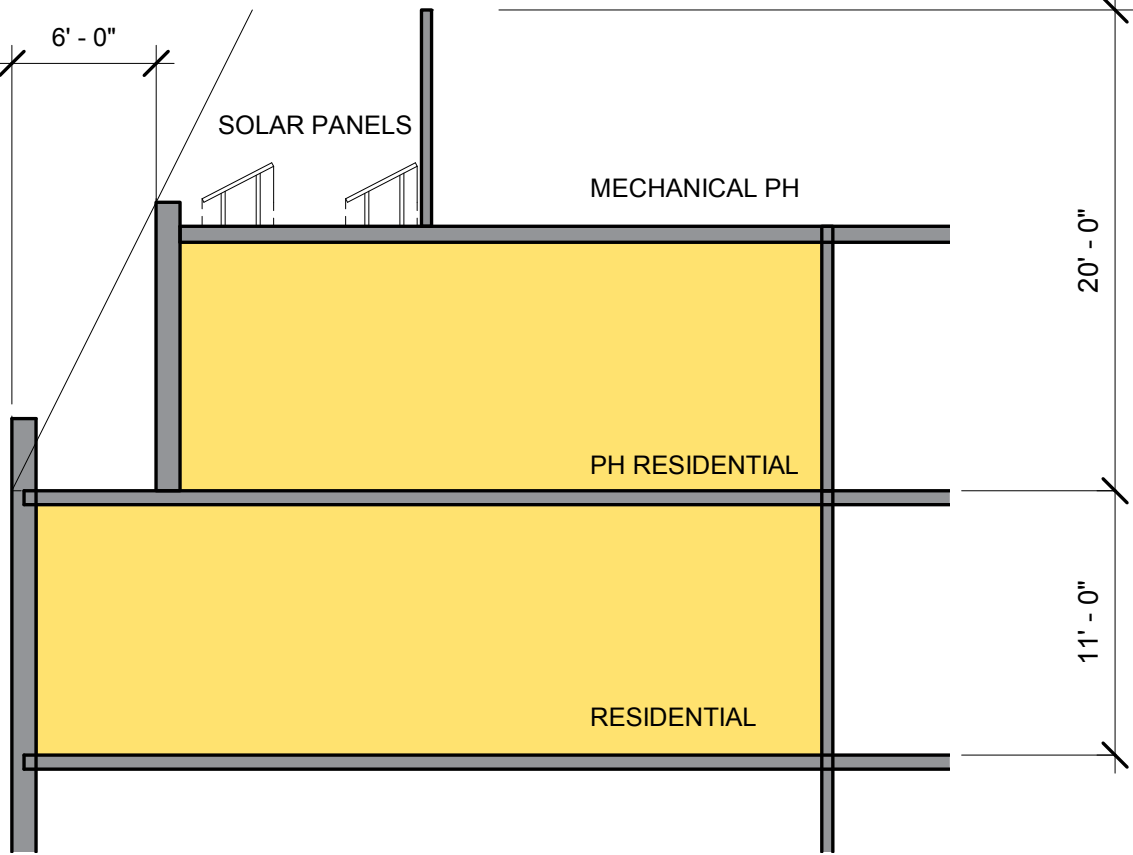
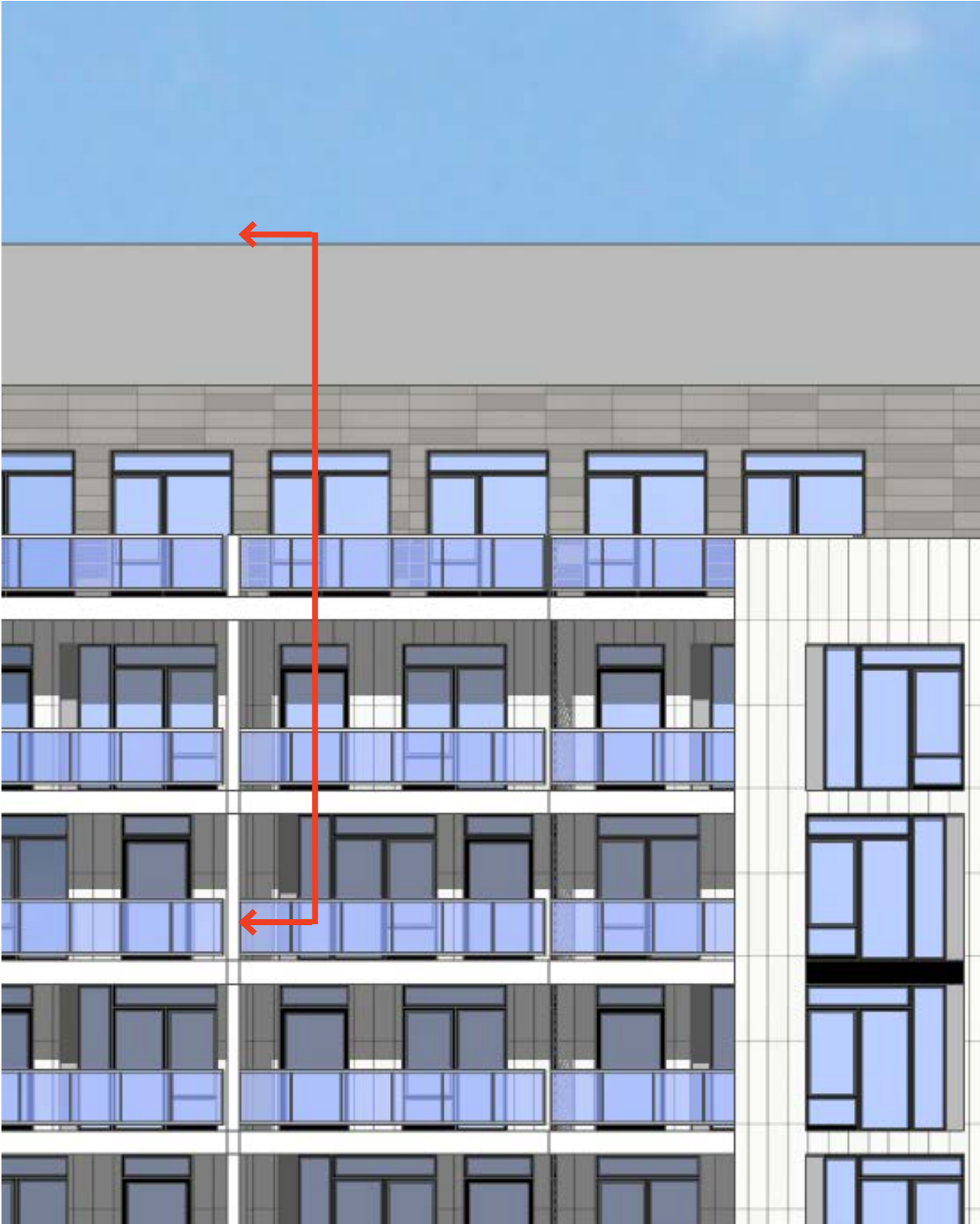
- SPACES DENOTED AS "RETAIL" MAY INCLUDE USES IN THE RETAIL, SERVICE, AND EATING AND DRINKING ESTABLISHMENT USE CATEGORIES.
- SPACES DENOTED AS "ARTS/CULTURAL" MAY INCLUDE USES IN THE ARTS, DESIGN, AND CREATION OR ENTERTAINMENT, ASSEMBLY, AND PERFORMING ARTS USE CATEGORIES.
- SPACES DENOTED AS "EDUCATIONAL/DAYCARE" MAY INCLUDE USES IN THE DAYTIME CARE OR EDUCATION USE CATEGORIES.



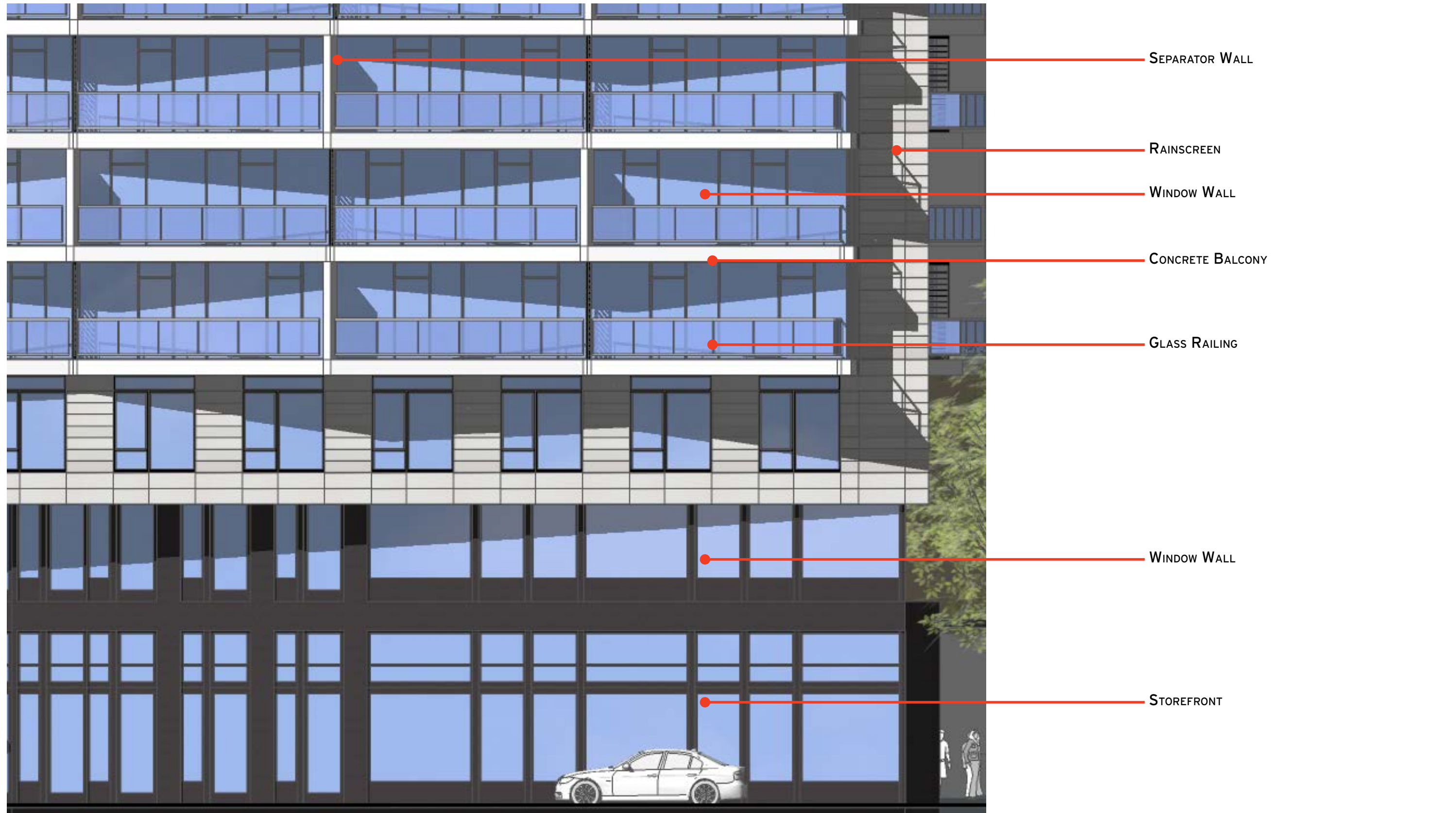
Enlarged Building Section | Typical Setback Condition



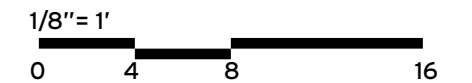
Enlarged Building Section | Courtyard Setback Condition



Enlarged Elevation | Typical Material Configuration



1. SELECTION TO BE IDENTIFIED IN SUBSEQUENT SUBMISSION



Enlarged Elevation | Typical Material Configuration



MECHANICAL METAL SCREEN WALL

RAINSCREEN

RAINSCREEN COLOR 3

ALUMINUM WINDOW

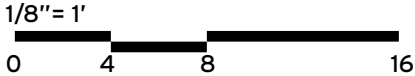
WINDOW WALL

CONCRETE BALCONY

GLASS RAILING

SEPARATOR WALL

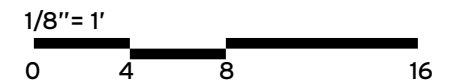
1. SELECTION TO BE IDENTIFIED IN SUBSEQUENT SUBMISSION



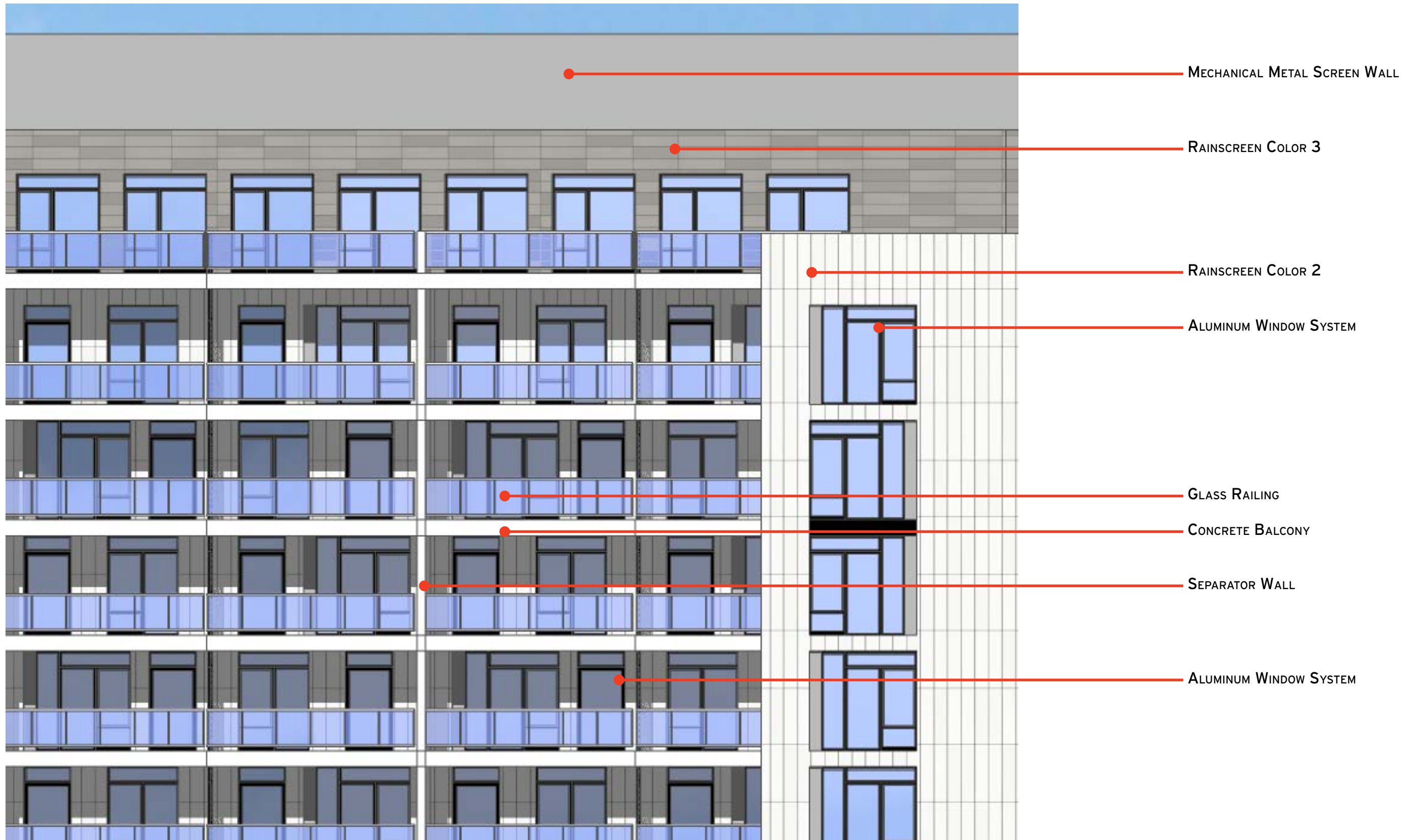
Enlarged Elevation | Courtyard Material Configuration



1. SELECTION TO BE IDENTIFIED IN SUBSEQUENT SUBMISSION



Enlarged Elevation | Courtyard Material Configuration



1. SELECTION TO BE IDENTIFIED IN SUBSEQUENT SUBMISSION

